

Panca Malpensa

cod. P843

belca



Descrizione

Coppia di traversi sottopiano e gambe laterali in tubo di acciaio da 40x40 mm.

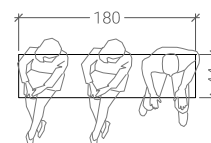
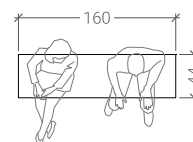
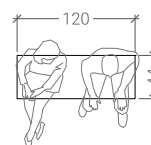
Verniciatura a polveri termoindurenti nei colori di serie.

Seduta di dimensioni standard e di altre a richiesta, disponibile in diverse tipologie.

Gambe smontabili.

Piedini in PVC.

Dimensioni standard

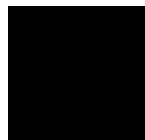


Panca Malpensa

cod.P843

belca

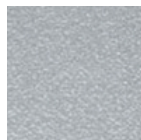
Finitura telaio



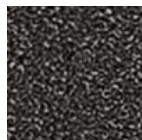
NERO



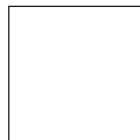
ALLUMINIO
METALLIZZATO
RAL 9006



ALLUMINIO
GOFFRATO

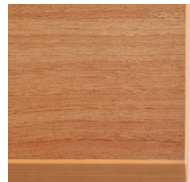


GRIGIO
SCURO
GOFFRATO



BIANCO
RAL 9003

Tipologia seduta



TIPO A20
Melaminico
Bordo ABS 25 mm



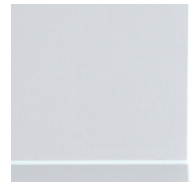
TIPO B2
Laminato
Bordo ABS 25 mm



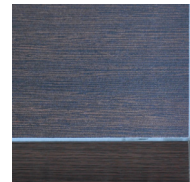
TIPO C2ABS
Laminato IGNIFUGO
Bordo ABS 27 mm



TIPO H20
Laminato
Bordo ABS 20 mm



TIPO H24
Laminato
Bordo ABS 24 mm



TIPO K
Laminato
Bordo ABS 50mm