

Sedia Tecla

cod. S4135

belca



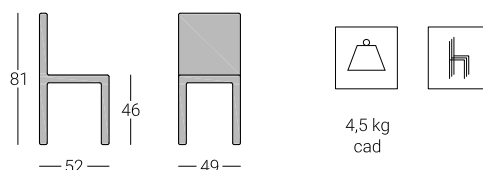
Descrizione

Telaio in tubo di acciaio Ø 25 mm, verniciato a polveri termoindurenti nei colori di serie oppure cromato.

Sedile e schienale in legno multistrato rivestito in laminato plastico a scelta nei colori standard oppure di altri a richiesta.

Impilabile.

Dimensioni



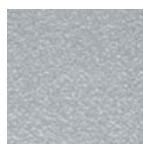
Finitura telaio



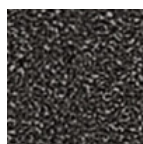
NERO



ALLUMINIO
METALLIZZATO
RAL 9006



ALLUMINIO
GOFFRATO



GRIGIO
SCURO
GOFFRATO



BIANCO
RAL 9003



CROMATO

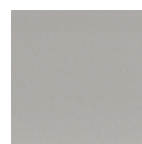
Colore sedute



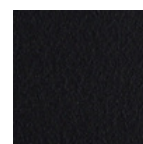
BIANCO
A0020



AVORIO
A0244



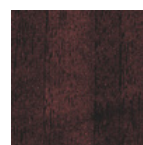
GRIGIO
CHIARO
A0527



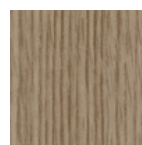
NERO
A0509



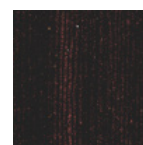
FAGGIO
A1286



NOCE
A1890



ROVERE
SBIANCATO
6L6



WENGÉ
P3121/1