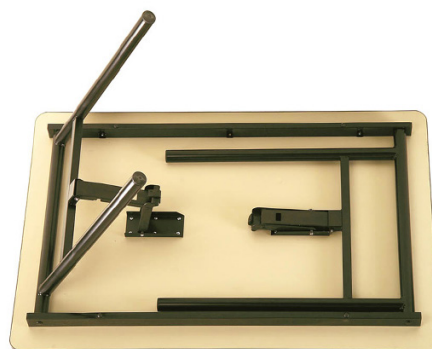


Tavolo Liegi

cod. T105

belca



Descrizione

Traversi laterali sottopiano in tubo di acciaio da 50x20 mm. e gambe in tubo di acciaio Ø 38 mm.

Verniciatura a polveri termoindurenti nei colori di serie.

Snodo pieghevole in PVC caricato con fibre di vetro di colore nero che blocca le gambe sia in posizione aperta che chiusa.

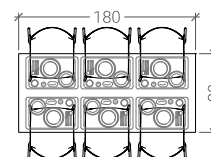
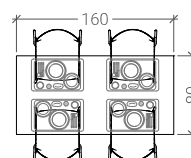
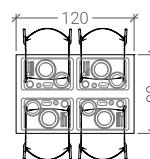
Piano di dimensioni standard e di altre a richiesta, disponibile in diverse tipologie.

Piedini in PVC.

Accessori:

- carrello trasporto tavoli.

Dimensioni standard

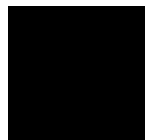


Tavolo Liegi

cod. T105

belca

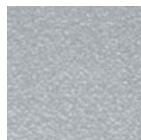
Finitura telaio



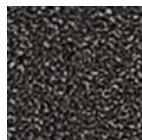
NERO



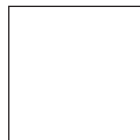
ALLUMINIO
METALLIZZATO
RAL 9006



ALLUMINIO
GOFFRATO



GRIGIO
SCURO
GOFFRATO



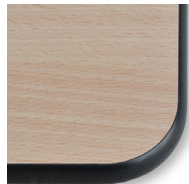
BIANCO

RAL 9003

Tipologia piano tavolo



TIPO A
Melaminico
Bordo PVC 20 mm



TIPO A10
Melaminico
Bordo PVC 25 mm



TIPO B1
Laminato
Bordo PVC 25 mm



TIPO C
Laminato
Bordo PVC 24 mm



TIPO C2
Laminato IGNIFUGO
Bordo PVC 27 mm