

Tavolo Brema

cod. T112

belca



Descrizione

Telaio sottopiano in tubo di acciaio da 50x20 mm e gambe in tubo di acciaio quadro da 50x50 mm.

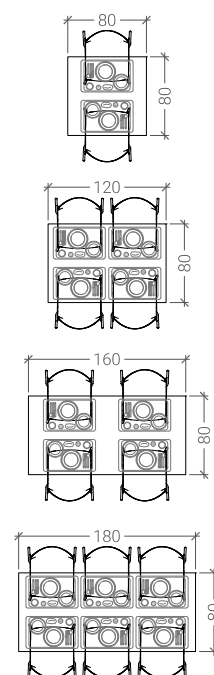
Verniciatura a polveri termoindurenti nei colori di serie.

Piano di dimensioni standard e di altre a richiesta, disponibile in diverse tipologie.

Gambe smontabili.

Piedini in tubo di acciaio inox satinato con gommini in PVC.

Dimensioni standard

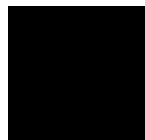


Tavolo Brema

belca

cod. T112

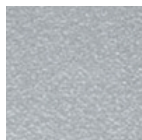
Finitura telaio



NERO



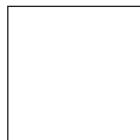
ALLUMINIO
METALLIZZATO
RAL 9006



ALLUMINIO
GOFFRATO

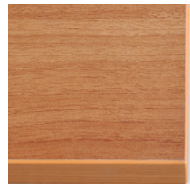


GRIGIO
SCURO
GOFFRATO

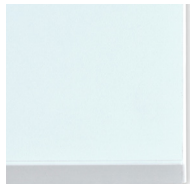


BIANCO
RAL 9003

Tipologia piano tavolo



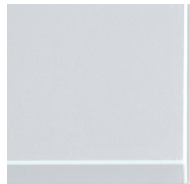
TIPO A20
Melaminico
Bordo ABS 25 mm



TIPO B2
Laminato
Bordo ABS 25 mm



TIPO H20
Laminato
Bordo ABS 20 mm



TIPO H24
Laminato
Bordo ABS 24 mm



TIPO H1
Laminato
Bordo PVC 30 mm



TIPO E
Laminato
Bordo legno 30 mm