

Tavolo Gent

cod. T116

belca



Descrizione

Telaio in tubo di acciaio Ø 25 mm.

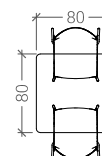
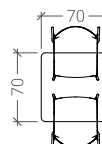
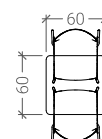
Verniciatura a polveri termoindurenti nei colori di serie.

Piano di dimensioni standard, disponibile in diverse tipologie.

Piedini in PVC.

Utilizzabile all'esterno.

Dimensioni standard

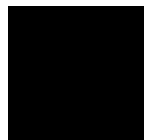


Tavolo Gent

cod. T116

belca

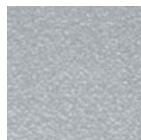
Finitura telaio



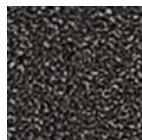
NERO



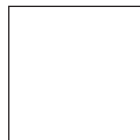
ALLUMINIO
METALLIZZATO
RAL 9006



ALLUMINIO
GOFFRATO



GRIGIO
SCURO
GOFFRATO



BIANCO

RAL 9003

Tipologia piano tavolo



TIPO F
Werzalit



TIPO P
Laminato stratificato
10 mm