

Tavolo Amburgo 110

cod. T162

belca



Descrizione

Altezza 110 cm.

Telaio sottopiano in tubo di acciaio da 50x20 mm e gambe in tubo di acciaio quadro da 40x40 mm.

Verniciatura a polveri termoindurenti nei colori di serie.

Piano di dimensioni standard e di altre a richiesta, disponibile in diverse tipologie.

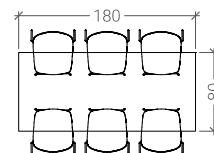
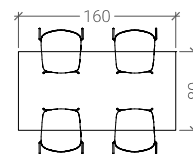
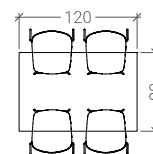
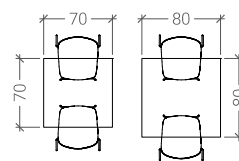
Gambe smontabili.

Piedini in PVC.

Accessori:

- piedini regolabili;
- gambe cromate.

Dimensioni standard

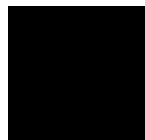


Tavolo Amburgo 110

belca

cod. T162

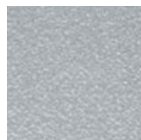
Finitura telaio



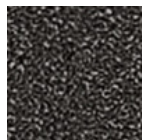
NERO



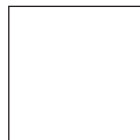
ALLUMINIO
METALLIZZATO
RAL 9006



ALLUMINIO
GOFFRATO



GRIGIO
SCURO
GOFFRATO



BIANCO
RAL 9003

Tipologia piano tavolo



TIPO A
Melaminico
Bordo PVC 20 mm



TIPO A10
Melaminico
Bordo PVC 25 mm



TIPO B1
Laminato
Bordo PVC 25 mm



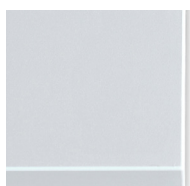
TIPO C
Laminato
Bordo PVC 24 mm



TIPO B2
Laminato
Bordo ABS 25 mm



TIPO H20
Laminato
Bordo ABS 20 mm



TIPO H24
Laminato
Bordo ABS 24 mm